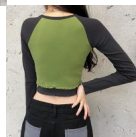
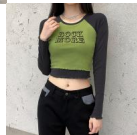


2020 Fast Sell Through European And American Women's Round Neck Alphabet Print Color Contrast Slim Fit Open Navel Long Sleeve T-shirt Fake Two Tops



2020 Fast Sell Through European And American Women's Round Neck Alphabet Print Color Contrast Slim Fit Open Navel Long Sleeve T-shirt Fake Two Tops

Rating: Not Rated Yet

Price

\$4.23

[Ask a question about this product](#)

Manufacturer

Description	Product specifics	
	Source Category:	Goods In Stock
	Place Of Origin:	Guangzhou
	Fabric Name:	Cotton Blended
	Main Fabric Composition:	Cotton
	Content Of Main Fabric Components:	91%-99%
	Main Fabric Composition 2:	Spandex
	The Main Content Of Fabric 2:	Less Than 10%
	Lining Composition:	Spandex
	Ingredient Content Of Lining:	Less Than 10%
	Pattern:	Printing
	Style:	Street
	Style:	Fake Two Piece Set
	Sleeve Length:	Long Sleeves
	Technology:	Printing / Dyeing
	Is It In Stock:	Yes
	Inventory Type:	Whole Order
	Article Number:	NW5082W0H
	Plate Type:	Slim Fit
	Length Of Clothes:	Short Style (40cm < Length ? 50cm)
	Collar Type:	Crew Neck
	Sleeve Type:	Regular Sleeve
	Popular Elements:	Lettering Color Contrast
	Launch Year / Season:	Autumn 2020
	Is The Origin Of Main Fabric Imported:	No
	Colour:	Blue
	Size:	M,L
Age Appropriate:	18-24 Years Old	
Style Type:	Street Trendsetters	
Product Category:	T-shirt	

Reviews

There are yet no reviews for this product.