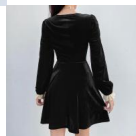
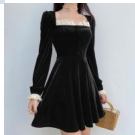
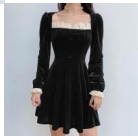
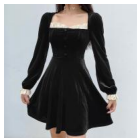


Sumitong Cross Border European And American Women's Square Neck Lace Splicing Palace Style Velvet Long Sleeve Dress 2020 NEW



Sumitong Cross Border European And American Women's Square Neck Lace Splicing Palace Style Velvet Long Sleeve Dress 2020 NEW

Rating: Not Rated Yet

Price

\$8.85

[Ask a question about this product](#)

Manufacturer

Description	Product specifics	
	Fabric Name:	Polyester Fiber
	Source Category:	Goods In Stock
	Style:	Street
	Pattern:	Splicing
	Technology:	Collage / Splicing
	Place Of Origin:	Guangzhou
	Inventory Type:	Whole Order
	Style:	Basic
	Combination Form:	Singleton
	Skirt Length:	Short Skirt
	Skirt Type:	A-line Skirt
	Collar Type:	Square Neck
	Sleeve Type:	Puff Sleeve
	Sleeve Length:	Long Sleeves
	Waist Type:	High Waist
	Placket:	Socket Head
	Popular Elements:	Lace Style
	Launch Year / Season:	Autumn 2020
	Main Fabric Composition:	Polyester (polyester)
	Content Of Main Fabric Components:	91%-99%
	Main Fabric Composition 2:	Spandex
	The Main Content Of Fabric 2:	Less Than 10%
	Lining Composition:	Spandex
	Ingredient Content Of Lining:	Less Than 10%
	Is It In Stock:	Yes
	Article Number:	NW6462W01
	Colour:	Black
	Is The Origin Of Main Fabric Imported:	No
	Size:	M,L
Age Appropriate:	18-24 Years Old	
Style Type:	Street Trendsetters	
Profile:	A-line Skirt	
Applicable Season:	Autumn	
Skirt Category:	Dress	

Reviews

There are yet no reviews for this product.