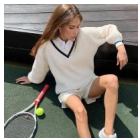


European And American Cross Border Trade Women's Wear Express Ins Long Sleeve Loose Wear Knitted Pullover Top Academic Style 2020



European And American Cross Border Trade Women's Wear Express Ins Long Sleeve Loose Wear Knitted Pullover Top Academic Style 2020

Rating: Not Rated Yet

Price

\$9.03

[Ask a question about this product](#)

Manufacturer

Description	Product specifics	
	Place Of Origin:	Guangzhou
	Article Number:	NW5966W0H
	Source Category:	Goods In Stock
	Inventory Type:	Whole Order
	Is It In Stock:	Yes
	Fabric Name:	Knitting
	Main Fabric Composition 2:	Polyester (polyester)
	Content Of Main Fabric Components:	30%-50%
	Main Fabric Composition:	Polyester (polyester)
	The Main Content Of Fabric 2:	10%-29%
	Pattern:	Printing
	Thick And Thin:	Moderate
	Wool Thickness:	Ordinary Wool
	Lining Composition:	Polyester (polyester)
	Ingredient Content Of Lining:	71%-80%
	Sweater Technology:	Knitting
	Combination Form:	One Piece Set
	Style:	Street
	Style:	Socket
	Plate Type:	Loose Fit
	Sleeve Type:	Regular Sleeve
	Launch Year / Season:	Autumn 2020
	Collar Type:	V-neck
	Placket:	Single Breasted
	Sleeve Length:	Long Sleeves
	Popular Elements:	Contrast Wool
	Length Of Clothes:	Medium Length (65cm < Length ? 80cm)
	Technology:	Resin Fixation
	Colour:	White
Size:	M,L	
Age Appropriate:	18-24 Years Old	
Style Type:	Street Trendsetters	
How To Dress:	Socket	
Product Category:	Sweater	

Reviews

There are yet no reviews for this product.