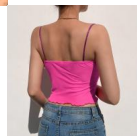
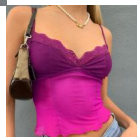


European And American Fashion Cross Border Express Ins Women's Wear Perspective Mesh Lace Splicing Navel Slim Waistcoat



European And American Fashion Cross Border Express Ins Women's Wear Perspective Mesh Lace Splicing Navel Slim Waistcoat

Rating: Not Rated Yet

Price

\$4.04

[Ask a question about this product](#)

Manufacturer

Description	Product specifics	
	Article Number:	NW7032V0I
	Place Of Origin:	Guangzhou
	Source Category:	Goods In Stock
	Is It In Stock:	Yes
	Inventory Type:	Whole Order
	Product Category:	Vest
	Style:	Europe And America
	Style:	Sling Type
	Collar Type:	V-neck
	Plate Type:	Slim Fit
	Length Of Clothes:	Short Style (40cm < Length ? 50cm)
	Pattern:	Solid Color
	Popular Elements:	Perspective, Backless, Gauze, Lace Stitching
	Launch Year / Season:	Summer 2020
	Fabric Name:	Netting
	Main Fabric Composition:	Polyester (polyester)
	Content Of Main Fabric Components:	91%-99%
	Lining Composition:	Spandex
	Ingredient Content Of Lining:	Less Than 10%
	Colour:	Gules
	Size:	M,L
	Age Appropriate:	18-24 Years Old
	Applicable Age Group:	Adult
	Applicable Gender:	Female

Reviews

There are yet no reviews for this product.