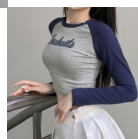
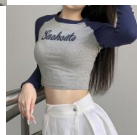
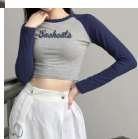
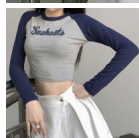


## Fashion Cross Border European And American Women's Letter Print Contrast Raglan Sleeve Slim And Navel Exposed Long Sleeve T-shirt 2020 NEW



Fashion Cross Border European And American Women's Letter Print Contrast Raglan Sleeve Slim And Navel Exposed Long Sleeve T-shirt 2020 NEW

Rating: Not Rated Yet

**Price**

\$4.41

[Ask a question about this product](#)

Manufacturer

Description	Product specifics	
	Source Category:	Goods In Stock
	Place Of Origin:	Guangzhou
	Fabric Name:	Cotton
	Main Fabric Composition:	Cotton
	Content Of Main Fabric Components:	100%
	Main Fabric Composition 2:	Cotton
	The Main Content Of Fabric 2:	100%
	Lining Composition:	Cotton
	Ingredient Content Of Lining:	100%
	Pattern:	Printing
	Style:	Street
	Style:	Socket
	Sleeve Length:	Long Sleeves
	Technology:	Printing / Dyeing
	Is It In Stock:	Yes
	Inventory Type:	Whole Order
	Article Number:	NW3936W0G
	Plate Type:	Slim Fit
	Length Of Clothes:	Short Style (40cm < Length ? 50cm)
	Collar Type:	Crew Neck
	Sleeve Type:	Raglan Sleeve
	Popular Elements:	Navel Exposed, Letters Color Contrast
	Launch Year / Season:	Autumn 2020
	Colour:	Grey
	Is The Origin Of Main Fabric Imported:	No
	Size:	M,L,XL
Age Appropriate:	18-24 Years Old	
Style Type:	Street Trendsetters	
Product Category:	T-shirt	

**Reviews**

There are yet no reviews for this product.