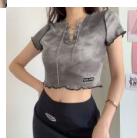
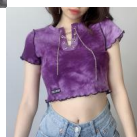
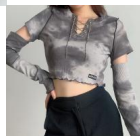
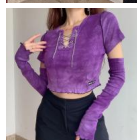


Ins Ultra Hot European And American Fashion Women's Tie Dye Printing Slim Lace Cut Out Chain Navel Top T-shirt For Women 2020



Ins Ultra Hot European And American Fashion Women's Tie Dye Printing Slim Lace Cut Out Chain Navel Top T-shirt For Women 2020

Rating: Not Rated Yet

Price

\$4.60

[Ask a question about this product](#)

Manufacturer

Description	Product specifics	
	Source Category:	Goods In Stock
	Place Of Origin:	Guangzhou
	Fabric Name:	Cotton
	Main Fabric Composition:	Cotton
	Content Of Main Fabric Components:	100%
	Main Fabric Composition 2:	Cotton
	Content Of Main Fabric Component 2:	100%
	Lining Composition:	Cotton
	Ingredient Content Of Lining:	100%
	Pattern:	Chain
	Style:	Street
	Style:	Socket
	Sleeve Length:	Short Sleeve
	Technology:	Printing / Dyeing
	Is It In Stock:	Yes
	Inventory Type:	Whole Order
	Article Number:	NW3359W0F/4496W0G
	Plate Type:	Slim Fit
	Length Of Clothes:	Short Style (40cm < Length ? 50cm)
	Collar Type:	V-neck
	Sleeve Type:	Regular Sleeve
	Popular Elements:	Hollow Out, Printing, Wave, Navel Exposed, Chain Slim Body Exposed Navel
	Launch Year / Season:	Summer 2020
	Is The Origin Of Main Fabric Imported:	No
Colour:	Purple, Blue, 4496w0g Long Sleeve Gray, 4496w0g Long Sleeve Purple, 4496w0g LONG SLEEVE BLUE	
Size:	M,L	
Age Appropriate:	18-24 Years Old	
Style Type:	Street Trendsetters	
Product Category:	T-shirt	

Reviews

There are yet no reviews for this product.