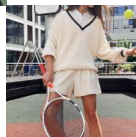
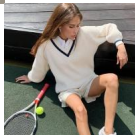


Autumn 2020 European And American Women's Fashion Express Wish Versatile Splicing Color Contrast Show Thin Loose Long Sleeve Sweater Issued By Women



Autumn 2020 European And American Women's Fashion Express Wish Versatile Splicing Color Contrast Show Thin Loose Long Sleeve Sweater Issued By Women

Rating: Not Rated Yet

Price

\$9.01

[Ask a question about this product](#)

Manufacturer

Description	Product specifics	
Article Number:	LQ5966W0H	
Place Of Origin:	Guangzhou	
Source Category:	Goods In Stock	
Inventory Type:	Whole Order	
Is It In Stock:	Yes	
Fabric Name:	Wollens	
Main Fabric Composition:	Acrylic Fibres	
Content Of Main Fabric	51%-70%	
Components:		
Main Fabric Composition 2:	Polyester (polyester)	
Content Of Main Fabric	30%-50%	
Component 2:		
Lining Composition:	Spandex	
Ingredient Content Of Lining:	Less Than 10%	
Style:	Street	
Pattern:	Color Contrast	
Wool Thickness:	Ordinary Wool	
Sweater Technology:	Knitting	
Thick And Thin:	Thin	
Style:	Socket	
Combination Form:	One Piece Set	
Plate Type:	Loose Fit	
Length Of Clothes:	Regular (50cm ? Length ? 65cm)	
Placket:	Single Breasted	
Sleeve Length:	Long Sleeves	
Sleeve Type:	Regular Sleeve	
Popular Elements:	Splicing	
Technology:	Collage / Splicing	
Launch Year / Season:	Autumn 2020	
Colour:	White	
Size:	M,L	
Age Appropriate:	18-24 Years Old	
Fashion Style:	Europe And America	
Style Type:	Street Trendsetters	
How To Dress:	Socket	
Applicable Age Group:	Adult	
Applicable Gender:	Female	
Product Category:	Sweater	

Reviews

There are yet no reviews for this product.