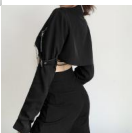
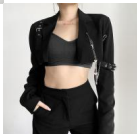
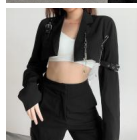


2020 European And American Street Dark Style Women's Quick Sale New Chain Leather Button Long Sleeve Suit Thin Slim Coat



2020 European And American Street Dark Style Women's Quick Sale New Chain Leather Button Long Sleeve Suit Thin Slim Coat

Rating: Not Rated Yet

Price

\$9.20

[Ask a question about this product](#)

Manufacturer

Description	Product specifics	
Place Of Origin:	Guangzhou	
Article Number:	LQ4431W0G	
Source Category:	Goods In Stock	
Is It In Stock:	Yes	
Inventory Type:	Whole Order	
Fabric Name:	Suit Woven	
Main Fabric Composition:	Polyester (polyester)	
Content Of Main Fabric Components:	91%-99%	
Main Fabric Composition 2:	Spandex	
Content Of Main Fabric Component 2:	Less Than 10%	
Lining Composition:	Polyester (polyester)	
Ingredient Content Of Lining:	91%-99%	
Pattern:	Chain	
Style:	Street	
Plate Type:	Slim Fit	
Combination Form:	One Piece Set	
Thick And Thin:	Thin Money	
Length Of Clothes:	Short Style (40cm < Length ? 50cm)	
Sleeve Length:	Long Sleeves	
Sleeve Type:	Regular Sleeve	
Collar Type:	Tailored Collar	
Placket:	Single Breasted	
Popular Elements:	Chain Bow	
Technology:	Collage / Splicing	
Launch Year / Season:	Summer 2020	
Colour:	Black	
Size:	M,L	
Age Appropriate:	18-24 Years Old	
Fashion Style:	Europe And America	
Style Type:	Street Trendsetters	
Fabric 2 Components:	Spandex	
Applicable Age Group:	Adult	
Applicable Gender:	Female	
Fabric 2 Content:	Less Than 10%	
Fabric 3 Components:	Spandex	
Product Category:	Loose Coat	
Content Of Fabric 3 Components:	Less Than 10%	

Reviews

There are yet no reviews for this product.