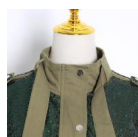
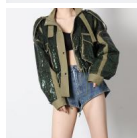


Europe Station Autumn And Winter 2020 New Fashion Symmetrical Pocket Heavy Industry Garment Body Sequin Hem Drawstring Long Sleeve Jacket Women



Europe Station Autumn And Winter 2020 New Fashion Symmetrical Pocket Heavy Industry Garment Body Sequin Hem Drawstring Long Sleeve Jacket Women

Rating: Not Rated Yet

Price

\$27.33

[Ask a question about this product](#)

Manufacturer

Description	Product specifics	
	Article Number:	TJA23255P
	Place Of Origin:	Jinhua
	Source Category:	Goods In Stock
	Brand:	GALCAUR
	Is It In Stock:	Yes
	Inventory Type:	Whole Order
	Fabric Name:	Polyester Fiber
	Main Fabric Composition:	Polyester Fiber (polyester)
	Content Of Main Fabric Components:	71%-80%
	Main Fabric Composition 2:	Spandex
	Content Of Main Fabric Component 2:	10%-29%
	Pattern:	Solid Color
	Style:	Street
	Typography:	Loose
	Combination Form:	One Piece Set
	Thick And Thin:	Ordinary
	Length Of Garment:	Ordinary (50cm < Length ? 65cm)
	Sleeve Length:	Long Sleeve
	Sleeve Shape:	Regular Sleeve
	Collar Type:	Stand Collar
	Placket:	Single Breasted
	Popular Elements:	Sequins, Heavy Industry, Stitching
	Technology:	Collage / Stitching
	Year / Season Of Listing:	Spring 2020
	Colour:	Green
	Size:	M,L
	Age Appropriate:	18-24 Years Old
	Clothing Style:	Europe And America
	Style Type:	Street Trendsetters
Applicable Age:	Adult	
Applicable Gender:	Female	
Product Category:	Loose Coat	

Reviews

There are yet no reviews for this product.