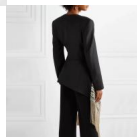
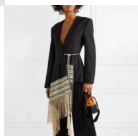


2020 New Autumn And Winter Heavy Industry Embroidery Jacquard Irregular Tassel Hem Waist Down Show Thin Suit Coat For Women



2020 New Autumn And Winter Heavy Industry Embroidery Jacquard Irregular Tassel Hem Waist Down Show Thin Suit Coat For Women

Rating: Not Rated Yet

Price

\$26.60

[Ask a question about this product](#)

Manufacturer

Description	Product specifics	
	Article Number:	TJA21236P
	Place Of Origin:	Guangzhou
	Source Category:	Goods In Stock
	Brand:	GALCAUR
	Is It In Stock:	Yes
	Inventory Type:	Whole Order
	Style:	Celebrity
	Pattern:	Printing
	Typography:	Slim
	Length Of Garment:	Ordinary (50cm < Length ? 65cm)
	Collar Type:	Tailored Collar
	Sleeve Length:	Long Sleeve
	Sleeve Shape:	Regular Sleeve
	Popular Elements:	Embroidery, Tassels, Irregular, Stitching
	Year / Season Of Listing:	Spring 2020
	Technology:	Collage / Stitching
	Fabric Name:	Cotton
	Main Fabric Composition:	Polyester Fiber (polyester)
	Content Of Main Fabric Components:	71%-80%
	Fabric 2 Ingredients:	Spandex
	Content Of Fabric 2 Components:	10%-29%
	Colour:	White, Black
	Size:	M,L,XL
	Age Appropriate:	18-24 Years Old
	Clothing Style:	Europe And America
Style Type:	Temperament Commuting	
Applicable Gender:	Female	
Product Category:	Blazer	

Reviews

There are yet no reviews for this product.