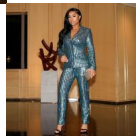
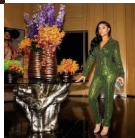


## Women's Wear Fall / Winter 2020 New European And American Suit Slim And Fashionable Sequin Professional Blazer Two Piece Suit



Women's Wear Fall / Winter 2020 New European And American Suit Slim And Fashionable Sequin Professional Blazer Two Piece Suit

Rating: Not Rated Yet

**Price**

\$11.83

[Ask a question about this product](#)

Manufacturer

|                    |  |                       |
|--------------------|--|-----------------------|
| Description        | Product specifics                      |                       |
|                    | Article Number:                        | BT19143               |
|                    | Place Of Origin:                       | Xiamen                |
|                    | Source Category:                       | Goods In Stock        |
|                    | Is It In Stock:                        | Yes                   |
|                    | Inventory Type:                        | Whole Order           |
|                    | Style:                                 | Sexy                  |
|                    | Pattern:                               | Stripe                |
|                    | Style:                                 | Pant Suit             |
|                    | Top Style:                             | Loose Coat            |
|                    | Sleeve Length Of Jacket:               | Long Sleeves          |
|                    | Pants Style:                           | Straight Pants        |
|                    | Length Of Trousers:                    | Trousers              |
|                    | Popular Elements:                      | Metallic, Stitching   |
|                    | Technology:                            | Collage / Splicing    |
|                    | Launch Year / Season:                  | Autumn 2020           |
|                    | Fabric Name:                           | Polyester             |
|                    | Main Fabric Composition:               | Polyester (polyester) |
|                    | The Main Content Of Fabric:            | 71%-80%               |
|                    | Main Fabric Composition 2:             | Polyester (polyester) |
|                    | Content Of Main Fabric Component 2:    | Less Than 10%         |
|                    | Lining Composition:                    | Polyester (polyester) |
|                    | Ingredient Content Of Lining:          | Less Than 10%         |
|                    | Is The Origin Of Main Fabric Imported: | No                    |
|                    | Colour:                                | Gold, Green, Blue     |
| Size:              | M,L,XL,2XL                             |                       |
| Age Appropriate:   | 25-29 Years Old                        |                       |
| Style Type:        | Temperament Commuting                  |                       |
| Applicable Gender: | Female                                 |                       |
| Product Category:  | Casual Suit                            |                       |

### Reviews

There are yet no reviews for this product.