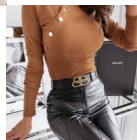


Independent Station Wise Amazon Popular Autumn / Winter 2020 New European And American Fashion Button Slim Bottom Top



Independent Station Wise Amazon Popular Autumn / Winter 2020 New European And American Fashion Button Slim Bottom Top

Rating: Not Rated Yet

Price

\$4.39

[Ask a question about this product](#)

Manufacturer

Description	Product specifics	
	Article Number:	1610
	Place Of Origin:	Guangzhou
	Source Category:	Goods In Stock
	Inventory Type:	Whole Order
	Is It In Stock:	Yes
	Fabric Name:	Other
	Main Fabric Composition:	Cotton
	Content Of Main Fabric Components:	71%-80%
	Main Fabric Composition 2:	Polyester (polyester)
	Content Of Main Fabric Component 2:	71%-80%
	Lining Composition:	Polyester (polyester)
	Ingredient Content Of Lining:	71%-80%
	Style:	Europe And America
	Pattern:	Solid Color
	Wool Thickness:	Ordinary Wool
	Sweater Technology:	Knitting
	Thick And Thin:	Moderate
	Style:	Socket
	Combination Form:	One Piece Set
	Plate Type:	Slim Fit
	Length Of Clothes:	Regular (50cm ? Length ? 65cm)
	Collar Type:	Crew Neck
	Sleeve Length:	Long Sleeves
	Sleeve Type:	Regular Sleeve
	Popular Elements:	Other
	Technology:	Collage / Splicing
	Launch Year / Season:	Winter 2020
	Colour:	Black, Ginger
	Size:	M,L,XL,2XL
	Age Appropriate:	18-24 Years Old
Fashion Style:	Europe And America	
Style Type:	Temperament Commuting	
How To Dress:	Socket	
Applicable Age Group:	Adult	
Applicable Gender:	Female	
Product Category:	Sweater	

Reviews

There are yet no reviews for this product.