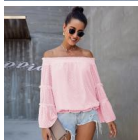


European And American New Style Shirt Female Dot Design Sexy Off Shoulder One Line Neck Flared Long Sleeve Loose Top 252239



European And American New Style Shirt Female Dot Design Sexy Off Shoulder One Line Neck Flared Long Sleeve Loose Top 252239

Rating: Not Rated Yet

Price

\$7.96

[Ask a question about this product](#)

Manufacturer

Description	Product specifics	
	Product Category:	Shirt
	Source Category:	Goods In Stock
	Fabric Name:	Polyester Fiber
	Main Fabric Composition:	Polyester (polyester)
	Content Of Main Fabric Components:	71%-80%
	Main Fabric Composition 2:	Polyester (polyester)
	Content Of Main Fabric Component 2:	71%-80%
	Lining Composition:	Spandex
	Ingredient Content Of Lining:	10%-29%
	Style:	Street
	Pattern:	Dot
	Style:	Socket
	Technology:	Collage / Splicing
	Article Number:	LC252239
	Place Of Origin:	Quanzhou
	Is It In Stock:	Yes
	Brand:	Shi Ying
	Inventory Type:	Whole Order
	Plate Type:	Loose Fit
	Length Of Clothes:	Regular (50cm ? Length ? 65cm)
	Collar Type:	One Word Collar
	Placket:	Socket
	Sleeve Type:	Pagoda Sleeve
	Sleeve Length:	Long Sleeves
	Popular Elements:	Splicing
	Launch Year / Season:	Autumn Of 2019
	Is The Origin Of Main Fabric Imported:	No
	Colour:	Red, Black, Green, Pink, Sky Blue, Dark Green, Apricot, Light Blue
	Size:	M,L,XL,2XL
Age Appropriate:	18-24 Years Old	
Clothing Style:	Europe And America	
Style Type:	Street Trendsetters	
Fabric 2 Components:	Polyester (polyester)	
Applicable Gender:	Female	
Fabric 2 Content:	71%-80%	
Fabric 3 Components:	Polyester (polyester)	

Reviews

There are yet no reviews for this product.