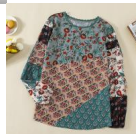
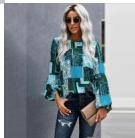


European And American Lace Stitching Shirt Women's Spring And Autumn New Loose Fashion Lantern Sleeve Crew Neck Pullover Women's Shirt



European And American Lace Stitching Shirt Women's Spring And Autumn New Loose Fashion Lantern Sleeve Crew Neck Pullover Women's Shirt

Rating: Not Rated Yet

Price

\$8.21

[Ask a question about this product](#)

Manufacturer

Description	Product specifics	
Product Category:	Shirt	
Source Category:	Goods In Stock	
Fabric Name:	Polyester	
Main Fabric Composition:	Polyester (polyester)	
Content Of Main Fabric	91%-99%	
Components:		
Main Fabric Composition 2:	Polyester (polyester)	
Content Of Main Fabric	91%-99%	
Component 2:		
Lining Composition:	Polyester (polyester)	
Ingredient Content Of Lining:	91%-99%	
Style:	Leisure Time	
Pattern:	Solid Color	
Style:	Socket	
Technology:	Collage / Splicing	
Article Number:	LC251349	
Place Of Origin:	Quanzhou	
Is It In Stock:	Yes	
Brand:	Shi Ying	
Inventory Type:	Whole Order	
Plate Type:	Loose Fit	
Length Of Clothes:	Regular (50cm ? Length ? 65cm)	
Collar Type:	Crew Neck	
Sleeve Type:	Bishop Sleeve	
Sleeve Length:	Long Sleeves	
Popular Elements:	Splicing	
Launch Year / Season:	Autumn Of 2019	
Is The Origin Of Main Fabric Imported:	No	
Colour:	Rose Red, Peacock Blue, Wine Red	
Size:	M,L,XL,2XL	
Age Appropriate:	25-29 Years Old	
Clothing Style:	Europe And America	
Style Type:	Urban Leisure	
Applicable Gender:	Female	
Placket:	Socket	

Reviews

There are yet no reviews for this product.