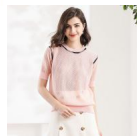


Knitwear Women's 2020 Summer New Hollow Mesh Perspective Sexy Crew Neck Ice Silk T-shirt Shenzhen Nanyou Women's Wear



Knitwear Women's 2020 Summer New Hollow Mesh Perspective Sexy Crew Neck Ice Silk T-shirt Shenzhen Nanyou Women's Wear

Rating: Not Rated Yet

Price

\$10.88

[Ask a question about this product](#)

Manufacturer

Description	Product specifics	
	Place Of Origin:	Dongguan Dalang
	Article Number:	2250
	Source Category:	Goods In Stock
	Inventory Type:	Whole Order
	Is It In Stock:	Yes
	Fabric Name:	Iced Silk
	Main Fabric Composition 2:	Nylon / Nylon
	Content Of Main Fabric Components:	51%-70%
	Main Fabric Composition:	Rayon
	Content Of Main Fabric Component 2:	30%-50%
	Pattern:	Solid Color
	Thick And Thin:	Thin
	Wool Thickness:	Ordinary Wool
	Sweater Technology:	Knitting
	Combination Form:	One Piece Set
	Style:	OI Commuting
	Style:	Socket
	Plate Type:	Straight Tube Type
	Sleeve Type:	Regular Sleeve
	Launch Year / Season:	Summer 2020
	Collar Type:	Crew Neck
	Sleeve Length:	Short Sleeve
	Popular Elements:	Irregular, Splicing
	Length Of Clothes:	Regular (50cm ? Length ? 65cm)
	Technology:	Collage / Splicing
	Colour:	Pink, Navy
	Size:	M,L
	Age Appropriate:	30-34 Years Old
	Style Type:	Temperament Commuting
How To Dress:	Socket	
Product Category:	Sweater	

Reviews

There are yet no reviews for this product.