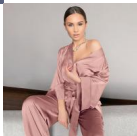


## Solid Women Robes Pajamas Comfortable Satin Fabric Sashes Loose Pajamas 2 Piece Set Casual Sleepwear Female Home Suits



Solid Women Robes Pajamas Comfortable Satin Fabric Sashes Loose Pajamas 2 Piece Set Casual Sleepwear Female Home Suits

Rating: Not Rated Yet

**Price**

\$9.60

[Ask a question about this product](#)

Manufacturer

Description	Product specifics	
	Product Category:	Suit
	Fabric Name:	Satin
	Style:	Suit
	Main Fabric Composition:	Polyester Fiber (polyester)
	Thickness:	Thin Style
	Fabric Thickness (g Weight):	Thin (121-140 G/m2)
	Collar Type:	Collarless
	Sleeve Length:	Long Sleeve
	Trousers Length:	Trousers
	Function:	Breastfeeding, Ventilation, Sleep, Bathing, Elasticity, Home, Cool, Comfortable, Wearable
	Time To Market:	Summer 2022
	Seasonal:	Universal In Winter, Spring, Autumn And All Seasons
	Applicable Population Category:	Young Women
	Applicable Scenario:	Home
	Colour:	Grey, Green, Black, Champagne, Burgundy, Blue, Light Brown, Light Green, Rose, Dark Blue, Khaki, Instant Hair, Ingredients: 95% Polyester 5% Spandex, Short Weight: 173g, Long Weight: 280g
	Size:	M,L,XL
	Place Of Origin:	Shantou
	Error Range:	±3CM
	Minimum OEM Quantity:	10
Content Of Main Fabric Components:	95% (included) - 100% (excluded)	
Minimum Number Of Labels:	10	
Style:	European Style	
Content Of Main Fabric Components:	95	
Content Of Main Fabric Components:	95	

## Reviews

There are yet no reviews for this product.