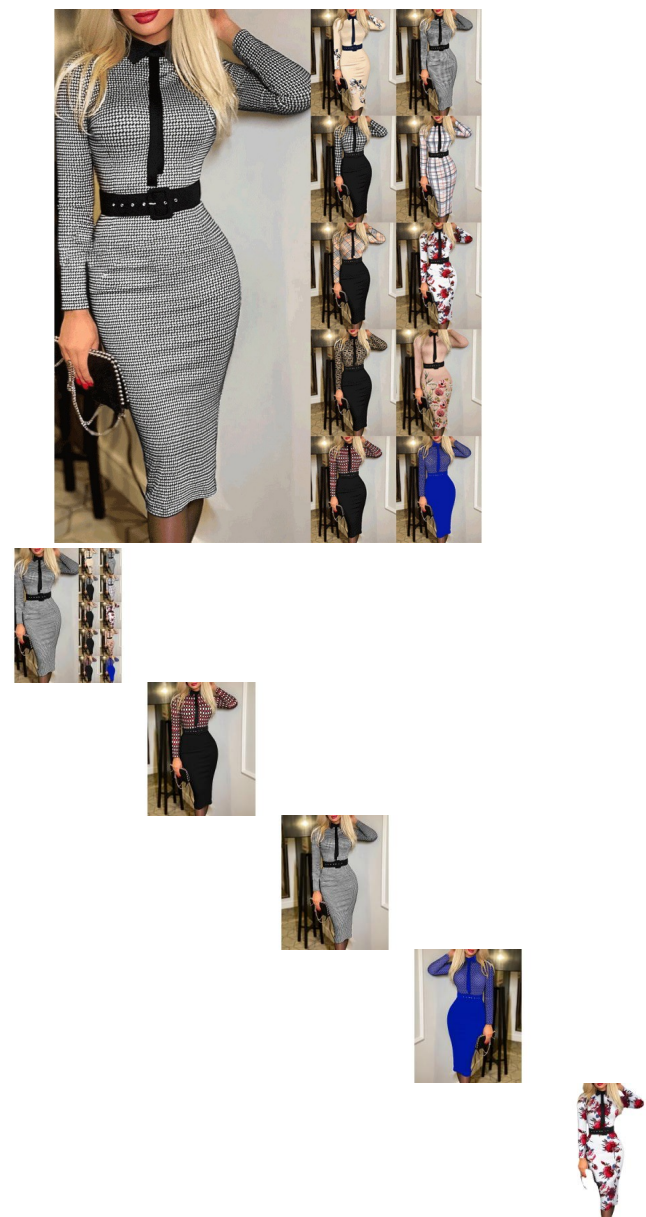


Autumn Spring Tight Dress Women Fashion Elegant Office Ladies Plaid Print Belt Long Sleeve Dress Women



Autumn Spring Tight Dress Women Fashion Elegant Office Ladies Plaid Print Belt Long Sleeve Dress Women

Rating: Not Rated Yet  
Price

\$7.88

[Ask a question about this product](#)

Manufacturer

Description	Product specifics	
	Fabric Name:	Cotton Polyester
	Place Of Origin:	Guangzhou
	Style:	Basic
	Combination Form:	Singleton
	Skirt Length:	Mid-length Skirt
	Skirt Type:	A-line Skirt
	Collar Type:	Tailored Collar
	Sleeve Type:	Regular Sleeve
	Sleeve Length:	Long Sleeve
	Waist Type:	Middle-waisted
	Popular Elements:	Printing, Splicing
	Year/season Of Launch:	Summer 2022
	Main Fabric Composition:	Polyester (polyester Fiber)
	Main Fabric Composition 2:	Cashmere
	Colour:	Blue, Bird Check, Checker Print, Safflower Print, Light Pink Print, Apricot Print, Picture Color-1, Picture Color-2, Popular Style With Continuous Color Addition
	Size:	M,L,XL,2XL,3XL
	Style Type:	Temperament Commuting
	Placket :	Insert
	Content Of Main Fabric Components:	50% (excluded) - 70% (included)
	Style:	Commuting Wind
	Skirt Category:	Dress
	Cross-border Style Type:	Elegant Temperament
	Cross-border Source Or Not:	Yes
	Main Downstream Sales Regions 1:	Europe And America
	Main Downstream Sales Regions 2:	Europe And America

Reviews

There are yet no reviews for this product.